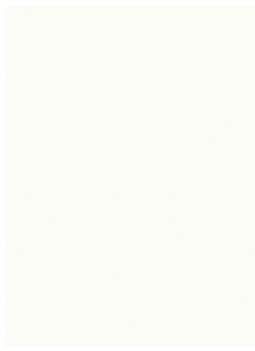


D&R Henderson Pty Limited

Fast • Sustainable • Competitive



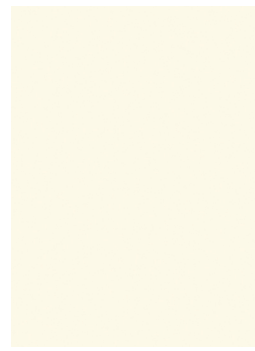
Melamine
Colour & Design Selection



Porcelain



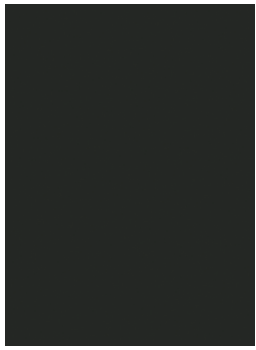
True Antique White



Antique Cream



Honey Oats

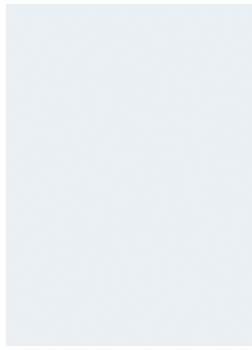


Sheer White

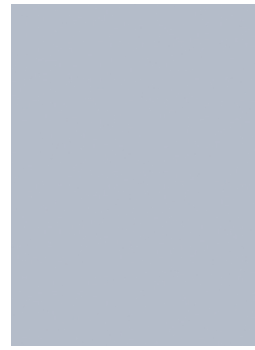
Black



Anthracite



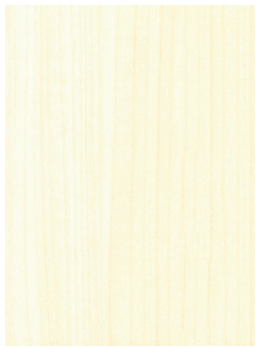
Sovereign Grey



Teal Blue



Graceland Blue



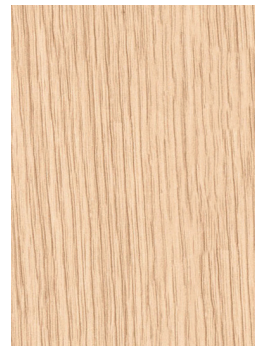
White Poplar



Rotary Birch



Light Pear



Vanilla Oak



Natural White Oak



Young Birch



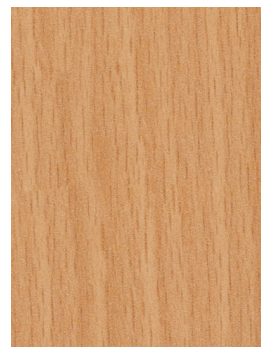
Limed Oak



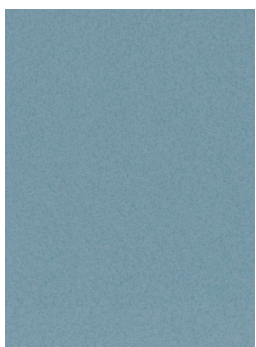
Bonde Beach



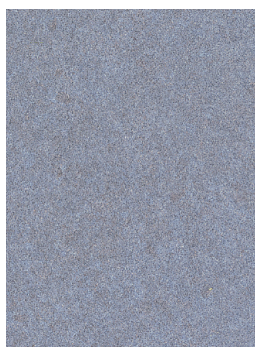
Sonova Beech



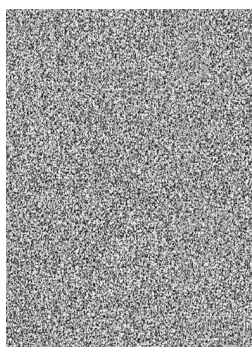
Refined Beech



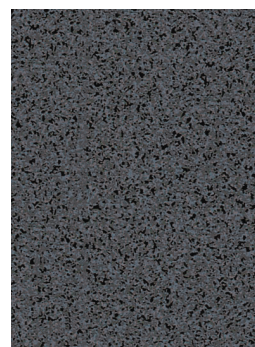
Ocean Spray



Blue Haze



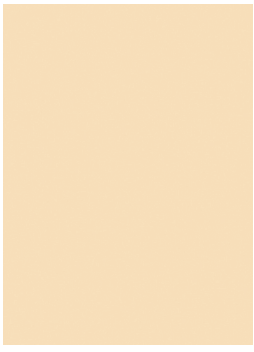
Pepper Grain



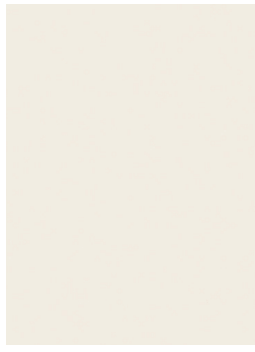
Riverstone



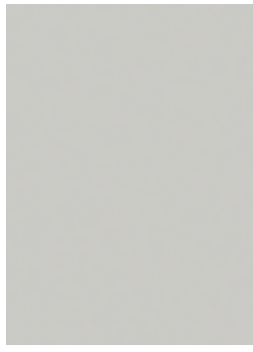
Brushed Aluminium



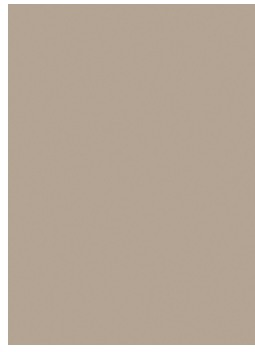
Light Yellow



Saxon Grey



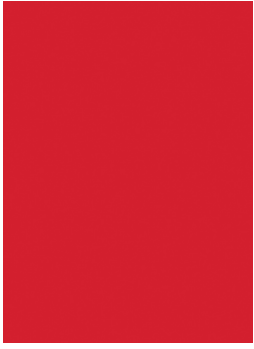
Florentine Grey



New Oyster



Fossick



Terra Red



Olympus Yellow



Oyster Micraline



Mushroom Micraline



Liquorice Micraline



Banstead Oak



Cherry Latte



Cab Weave Honey



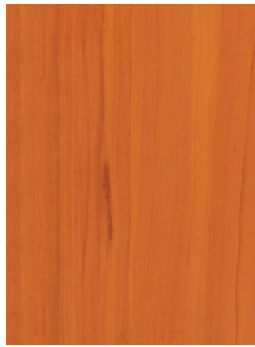
Cascade



Flax Teak



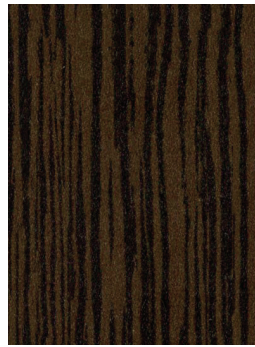
Baltic Pine



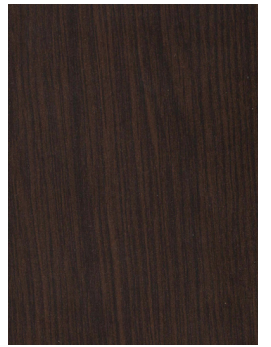
Cherry



New Mahogany



Wenge



Chocolate Apple



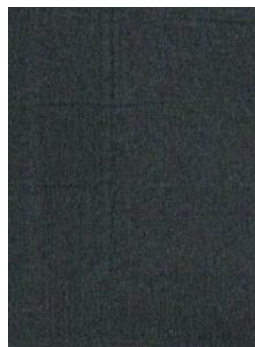
Stainless Maize



Aluminium Maize



Cab Steel



Cab Weave Charcoal



Espresso Walnut

Kitchen Availability Guide

| Design/Colour Name | MR-MDF | MR-PB | |
|---------------------------|-------------------|-------------------|-------------------|
| | 2400x1200 16mm | 2400x1200 16mm | 2400x1800 16mm |
| Aluminium Maize | ● | ● | ● |
| Antique Cream | ● | ● | ● |
| Black | ● | ● | ● |
| Brushed Aluminium | ● | ● | ● |
| Cab Steel | ● | ● | ● |
| Cab Weave Charcoal | ● | ● | ● |
| Cab Weave Honey | ● | ● | ● |
| Cascade | ● | ● | ● |
| Cherry | ● | ● | ● |
| Flax Teak | ● | ● | ● |
| Florentine Grey | ● | ● | ● |
| Fossick | ● | ● | ● |
| Graceland Blue | ● | ● | ● |
| Light Yellow | ● | ● | ● |
| Liquorice Micraline | ● | ● | ● |
| Mushroom Micraline | ● | ● | ● |
| Natural White Oak | ● | ● | ● |
| New Mahogany | ● | ● | ● |
| New Oyster | ● | ● | ● |
| Oyster Micraline | ● | ● | ● |
| Olympus Yellow | ● | ● | ● |
| Porcelain | ● | ● | ● |
| Sheer White (Ultra White) | ● | ● | ● |
| Sonova Beech | ● | ● | ● |
| Sovereign Grey-DRH | ● | ● | ● |
| Stainless Maize | ● | ● | ● |
| Terra Red | ● | ● | ● |
| True Antique White | ● | ● | ● |
| Wenge | ● | ● | ● |

- Product available
- Product not available
- Paper available – subject to minimum volumes and board availability

Edgetape available for all colours and designs in the following sizes:

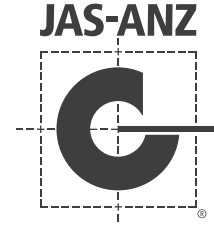
29 x 2 mm / 22 x 2 mm / 22 x 1 mm

Commercial Availability Guide

| Design/Colour Name | STD-PB | | |
|---------------------------|-------------------|-------------------|-------------------|
| | 3600x1800 16mm | 3600x1800 18mm | 3600x1800 25mm |
| Anthracite | ● | ● | ● |
| Antique Cream | ● | ● | ● |
| Baltic Pine | ● | ● | ● |
| Banstead Oak | ● | ● | ● |
| Black | ● | ● | ● |
| Blue Haze | ● | ● | ● |
| Bonde Beach | ● | ● | ● |
| Brushed Aluminium | ● | ● | ● |
| Cherry | ● | ● | ● |
| Cherry Latte | ● | ● | ● |
| Chocolate Apple | ● | ● | ● |
| Espresso Walnut | ● | ● | ● |
| Flax Teak | ● | ● | ● |
| Florentine Grey | ● | ● | ● |
| Graceland Blue | ● | ● | ● |
| Honey Oats | ● | ● | ● |
| Light Pear | ● | ● | ● |
| Limed Oak | ● | ● | ● |
| Natural White Oak | ● | ● | ● |
| Ocean Spray | ● | ● | ● |
| Pepper Grain | ● | ● | ● |
| Porcelain | ● | ● | ● |
| Refined Beech | ● | ● | ● |
| Riverstone | ● | ● | ● |
| Rotary Birch | ● | ● | ● |
| Saxon Grey | ● | ● | ● |
| Sheer White (Ultra White) | ● | ● | ● |
| Sonova Beech | ● | ● | ● |
| Teal Blue | ● | ● | ● |
| Vanilla Oak | ● | ● | ● |
| Wenge | ● | ● | ● |
| White Poplar | ● | ● | ● |
| Young Birch | ● | ● | ● |

MDF & MR-MDF substrate & other sizes available upon request
 E-Zero (E0) and Super E-Zero (SE0) substrate available upon request
 Default Plate Finish – CTX
 Décor & Satin Finishes available subject to minimum quantity

Fast • Sustainable • Competitive



Why choose D&R Henderson?

Sustainable

All boards contain post-consumer recycled material, all wood fibre is sustainably sourced.

Price and Availability

DRH is highly competitive and provides fast lead times on the melamine range.

Low emission – Moisture Resistant

MR-E0 (MF3) – all boards made from low emission moisture resistant resin.

Product Stewardship

Products can be returned to DRH Benalla at the end of the life cycle for reprocessing.

Australian Owned & Operated

DRH is the ONLY Australian owned and operated particleboard manufacturer in Australia.

Green Star credit compliance

Indoor Environment Quality

- Formaldehyde Minimisation
- F4 Star under JIS

Materials

- Sustainable post-consumer re-used timber
- Timber from re-used source

Contact our friendly customer service team for more information.

 **1300 733 266**

drhenderson.com.au